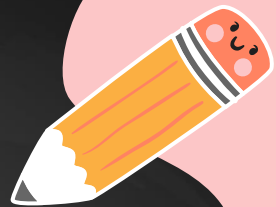


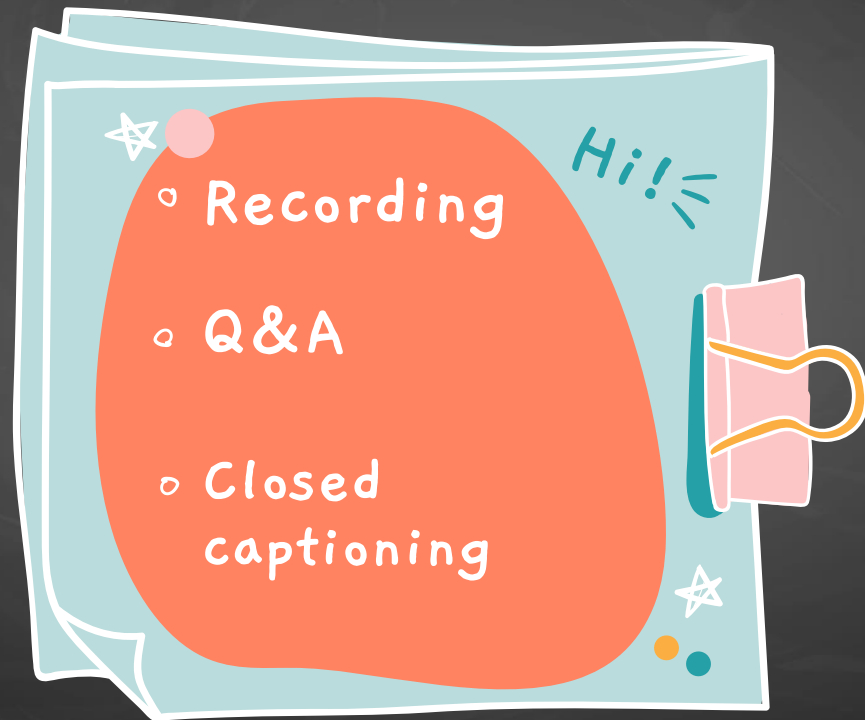
Bridging the Gap

Using Sora to Reclaim Unfinished Learning



TM

HOUSEKEEPING

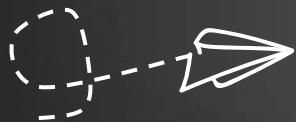


AGENDA



Data-driven decisions

--- *Defining the problem*



Learning continuity

--- *Getting from here to there*



Differentiation and inclusion

--- *Learning for all students*



SPEAKERS



Sheila Henline

Content Specialist
MLIS, SLMS



Jodi Solomon

Content Specialist
MLIS, SLMS,
MEd., MJS



Sara Douglas

Content Specialist
MLIS, SLMS





01

Data-driven decisions

Defining the problem

Has your school or district implemented a learning recovery or extended learning plan for this school year?

☐ Yes

☐ No

☐ Unsure

Where do we see Unfinished Learning?



Summer
slide



COVID era
instruction

Reading & Math

Who is being left behind?



Low-income
families



Minority
students



Students with disabilities or
learning differences



English language
• learners



Students who
have previously
struggled



Students from
low-performing
schools

How far behind?

3-5
months

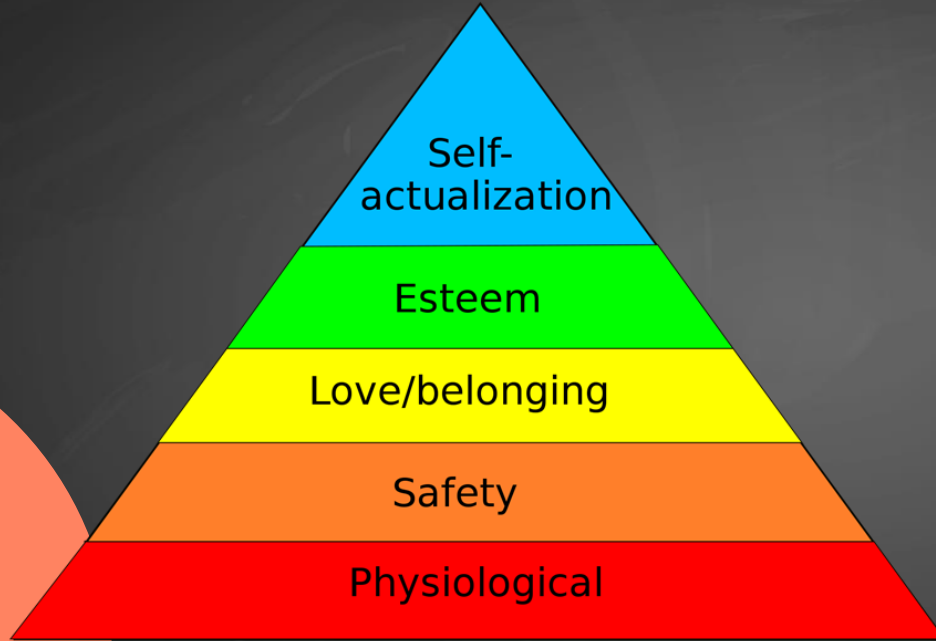
Students
of color

↓16%

Low-income
students



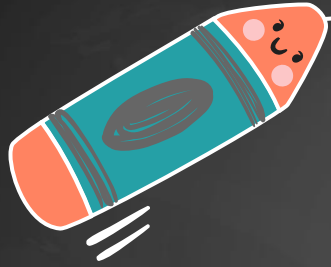
• Taking a closer look



This Photo by Unknown author is licensed under CC BY-SA.

- Students' hierarchy of needs
- Inequity in the effectiveness of online learning

What do students need?

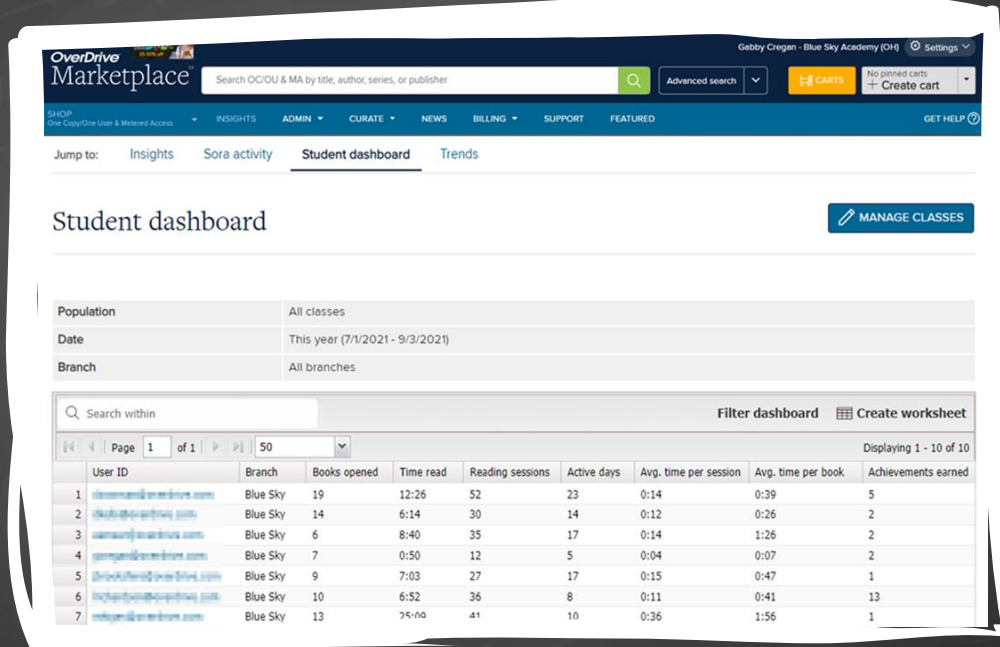


Support for health and
wellness first



Reduce focus on
remediation

Marketplace enhancement



The screenshot displays the OverDrive Marketplace interface, specifically the Student dashboard. The dashboard includes a navigation bar with links to SHOP, INSIGHTS, ADMIN, CURATE, NEWS, BILLING, SUPPORT, and FEATURED. A search bar is present at the top, and a 'MANAGE CLASSES' button is located on the right. The main content area shows a table of user activity with columns for User ID, Branch, Books opened, Time read, Reading sessions, Active days, Avg. time per session, Avg. time per book, and Achievements earned. The table is filtered to show 10 results, and the page number is 1 of 1.

OverDrive Marketplace

Gabby Cregan - Blue Sky Academy (OH) Settings

Search OCOU & MA by title, author, series, or publisher

Advanced search

CARTS

No pending carts

Create cart

Jump to: Insights Sora activity **Student dashboard** Trends

Student dashboard

MANAGE CLASSES

Population: All classes

Date: This year (7/1/2021 - 9/3/2021)

Branch: All branches

Search within

Filter dashboard

Create worksheet

Page 1 of 1

50

Displaying 1 - 10 of 10

	User ID	Branch	Books opened	Time read	Reading sessions	Active days	Avg. time per session	Avg. time per book	Achievements earned
1	blue-sky-academy@overdrive.com	Blue Sky	19	12:26	52	23	0:14	0:39	5
2	blue-sky-academy@overdrive.com	Blue Sky	14	6:14	30	14	0:12	0:26	2
3	blue-sky-academy@overdrive.com	Blue Sky	6	8:40	35	17	0:14	1:26	2
4	blue-sky-academy@overdrive.com	Blue Sky	7	0:50	12	5	0:04	0:07	2
5	blue-sky-academy@overdrive.com	Blue Sky	9	7:03	27	17	0:15	0:47	1
6	blue-sky-academy@overdrive.com	Blue Sky	10	6:52	36	8	0:11	0:41	13
7	blue-sky-academy@overdrive.com	Blue Sky	13	7:50	41	10	0:36	1:56	1

02

Learning continuity

Getting from here to there



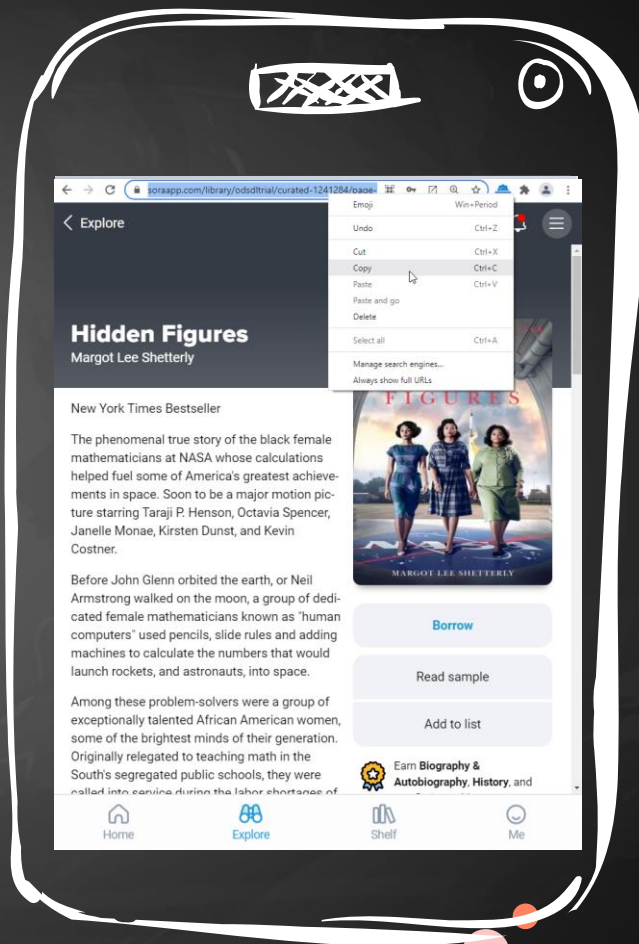
Which of these challenges is your school facing in light of the pandemic and its impact on classroom learning? Choose all that apply.

- ☐ Students and staff facing increased anxiety and mental health challenges due to the pandemic.
- ☐ Inequitable access to devices, internet, or other learning tools.
- ☐ Issues with online teaching & virtual learning, including gaps in attendance.
- ☐ Unfinished literacy learning among young readers in grades K-2.
- ☐ The need for more resources to meet students' varied needs, including struggling readers and ELL populations.
- ☐ Other (share in the chat!)

Social Emotional Learning (SEL)

Prioritize the social & emotional health and identities of students and teachers, while building connections with families and the community.

How can Sora help bridge the gap?



Social Emotional Learning (SEL): Resources



FREE Social and Emotional
Learning Collection



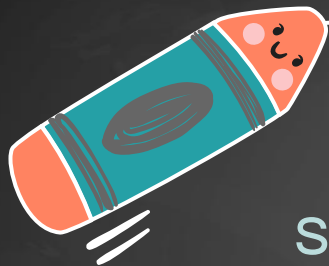
Webinars



Recommended Lists

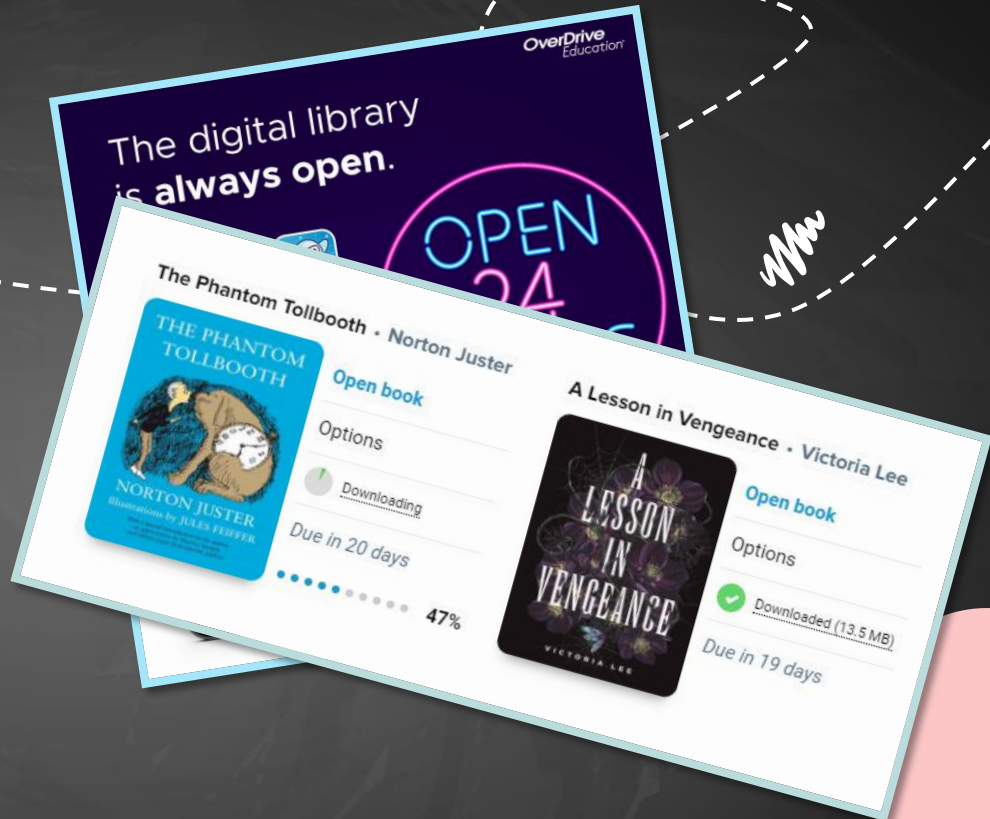


Equitable access



Sora provides:

- 24/7 availability
- Offline access

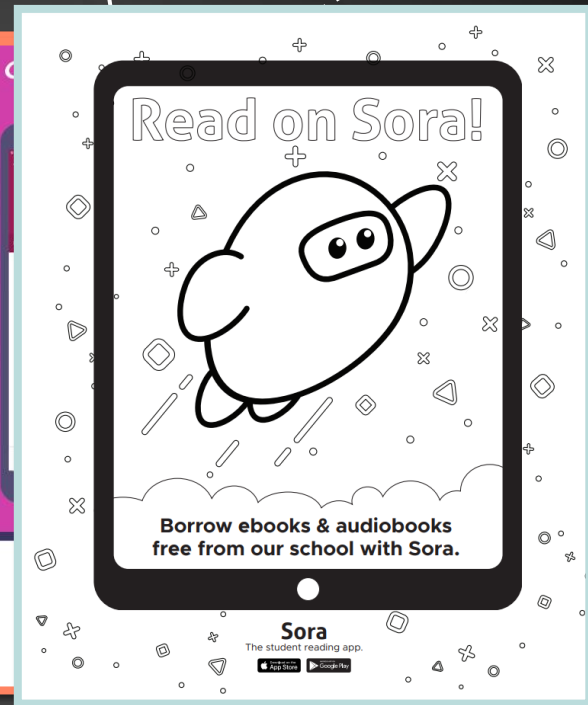


K-2 reading recovery

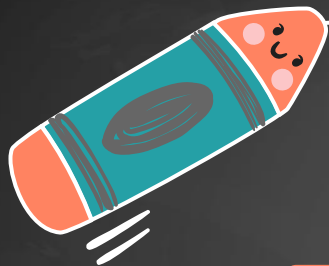


Learning continuity begins with a strong literacy foundation.

How can Sora help bridge the gap?



K-2 reading recovery: Resources



Webinars



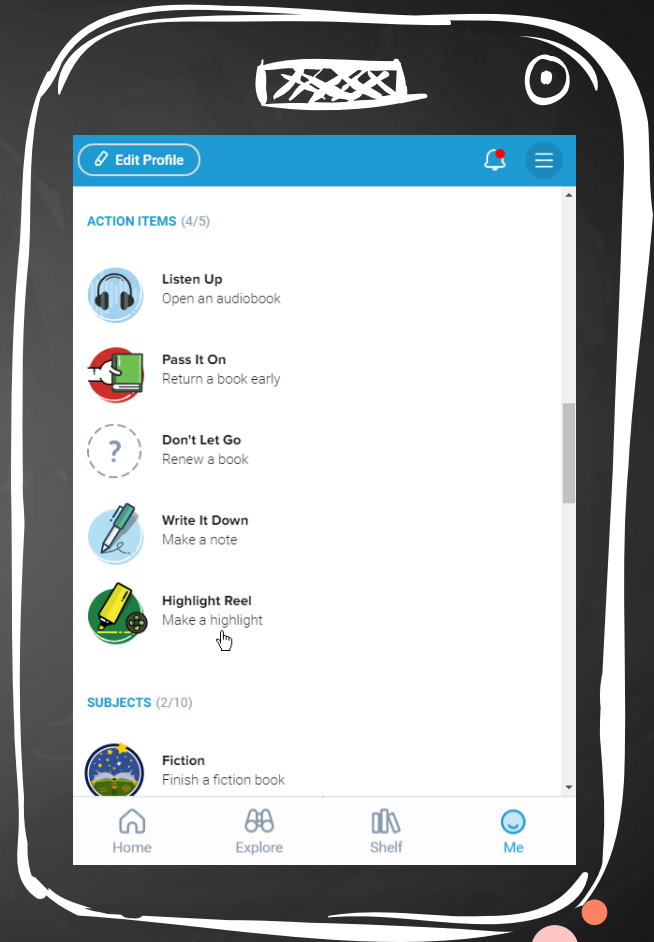
Recommended
Lists



Supplement & support

Leveraging the integration of technology can help to address skill gaps, in person or remotely.

How can Sora help to bridge the gap?



Supplement & support: Resources



How-To
Videos



Add a Public
Library



Marketing
Graphics



Lesson Plans



Recommended Lists



03

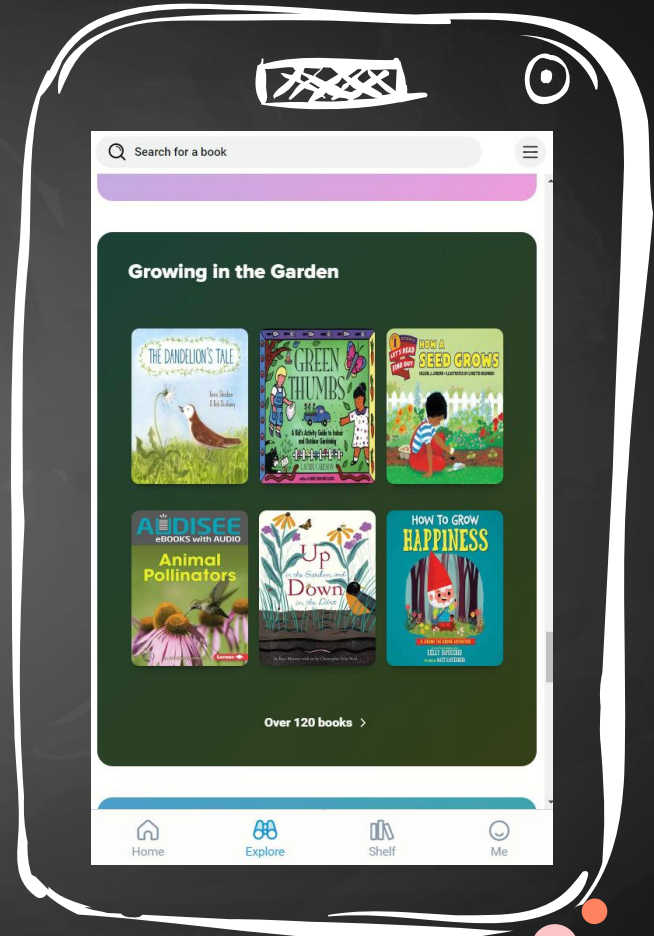
Differentiation and inclusion

Learning for all students

Differentiation & inclusion with Sora

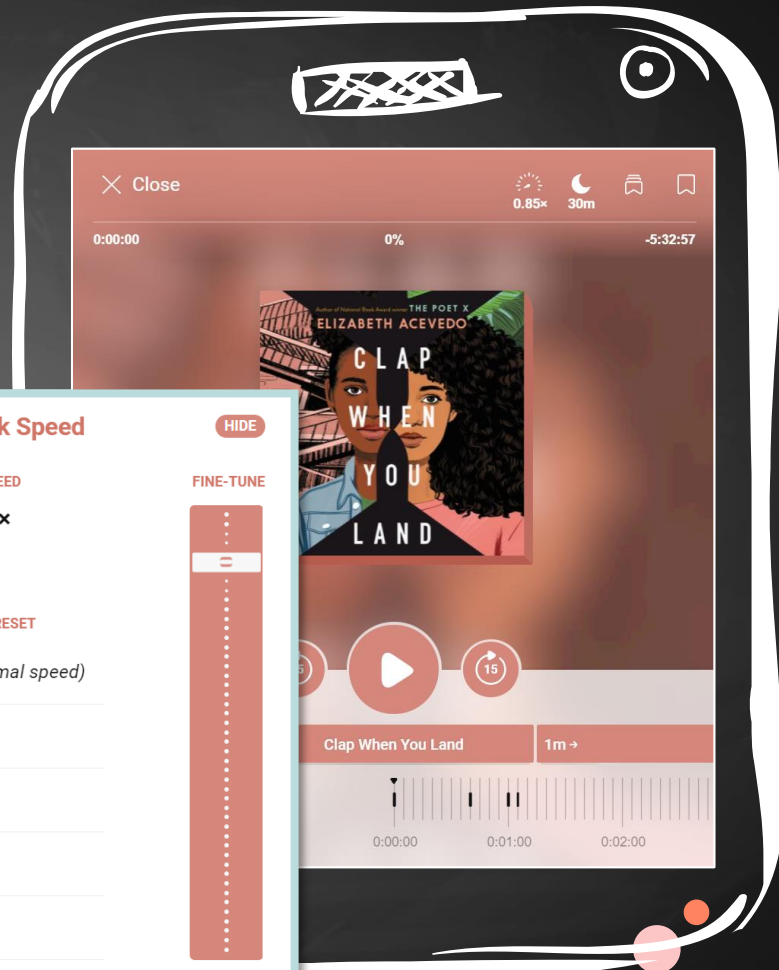
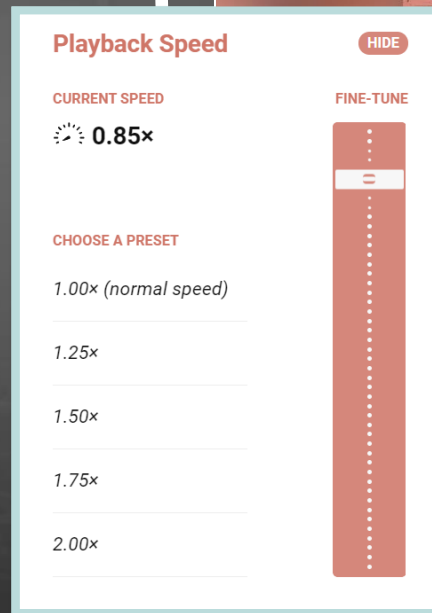
How can Sora help to bridge the gap?

- Inclusion
- Differentiation
- Connectivity



Meeting students' needs & preferences with Sora

- Customizable reading settings including adjustable text size, lighting, and font
- Customizable listening settings including adjustable playback speed and sleep timer



Differentiation & inclusion: Resources



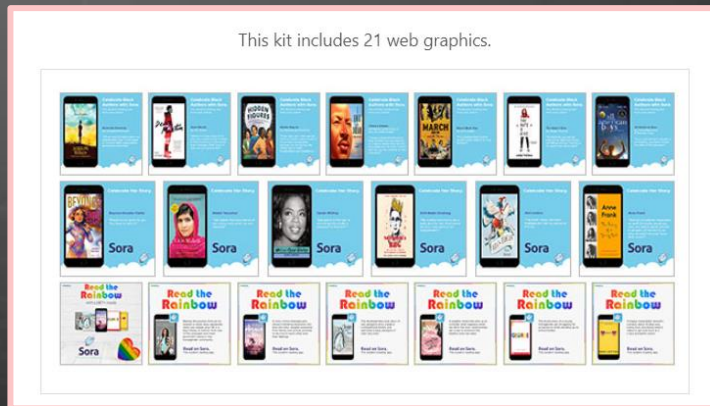
Audits & Webinars



Recommended Lists



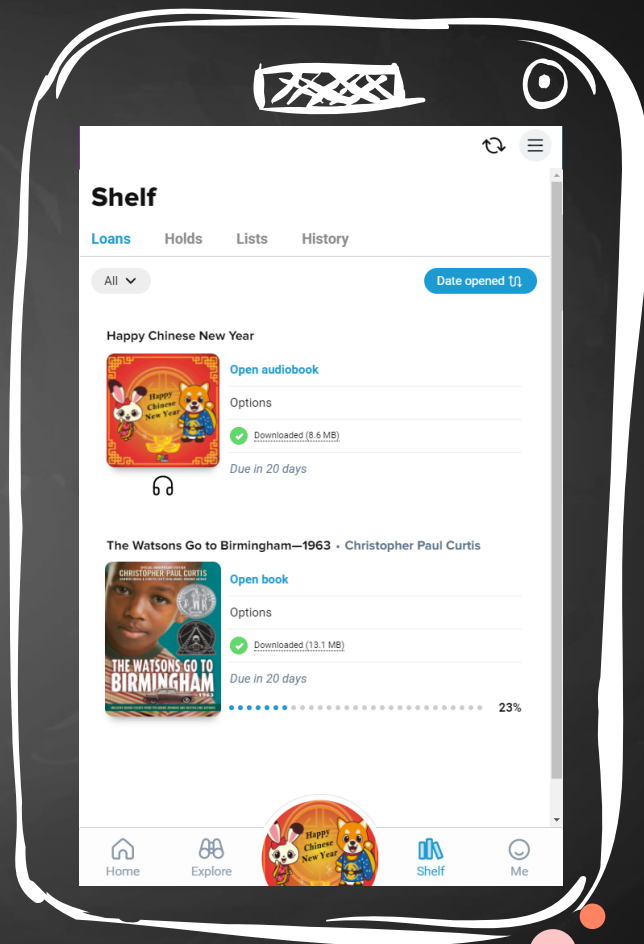
Outreach
Resources



English Language Learners (ELL)

How can Sora help to bridge the gap?

- Access to LOTE titles
- Define / Google translate
- Student privacy
- Audiobooks & Read-alongs with customizable settings
- Multilingual interface
- Offline access



English Language Learners (ELL): Resources

- [Multilingual getting started guides](#)
- Multilingual marketing kits
- [For Every Reader Kit](#)
- [Parent outreach materials](#)
- Webinars
- [Recommended lists](#)





75%

Three-quarters (75%) of respondents indicated they were using ARP funding for summer learning and enrichment offerings.



66%

Two-thirds (66%) of respondents plan to use ARP funding to add specialized instructional support staff and other specialists (e.g., counselor/social worker/reading specialists) to support specific student needs.

62%



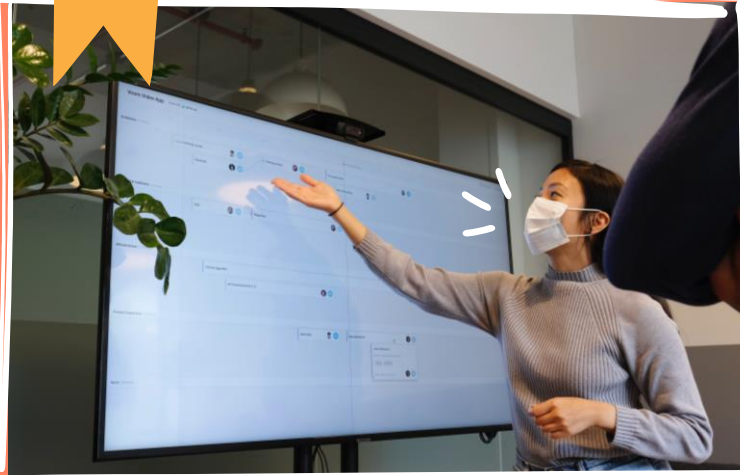
Nearly two-thirds (62%) are using ARP funds to purchase technology/devices and/or provide students with internet connectivity during the school year.

» Urban, suburban and rural districts all responded at nearly identical rates that they would be using ARP funding to add specialist staff.



52%

Slightly more than half (52%) of respondents said they would use ARP funding to implement or advance social-emotional learning practices and systems in their districts and/or on trauma-informed training for their educators.



04 Recap



To recap:



Unfinished
Learning



How Sora can
bridge the gap

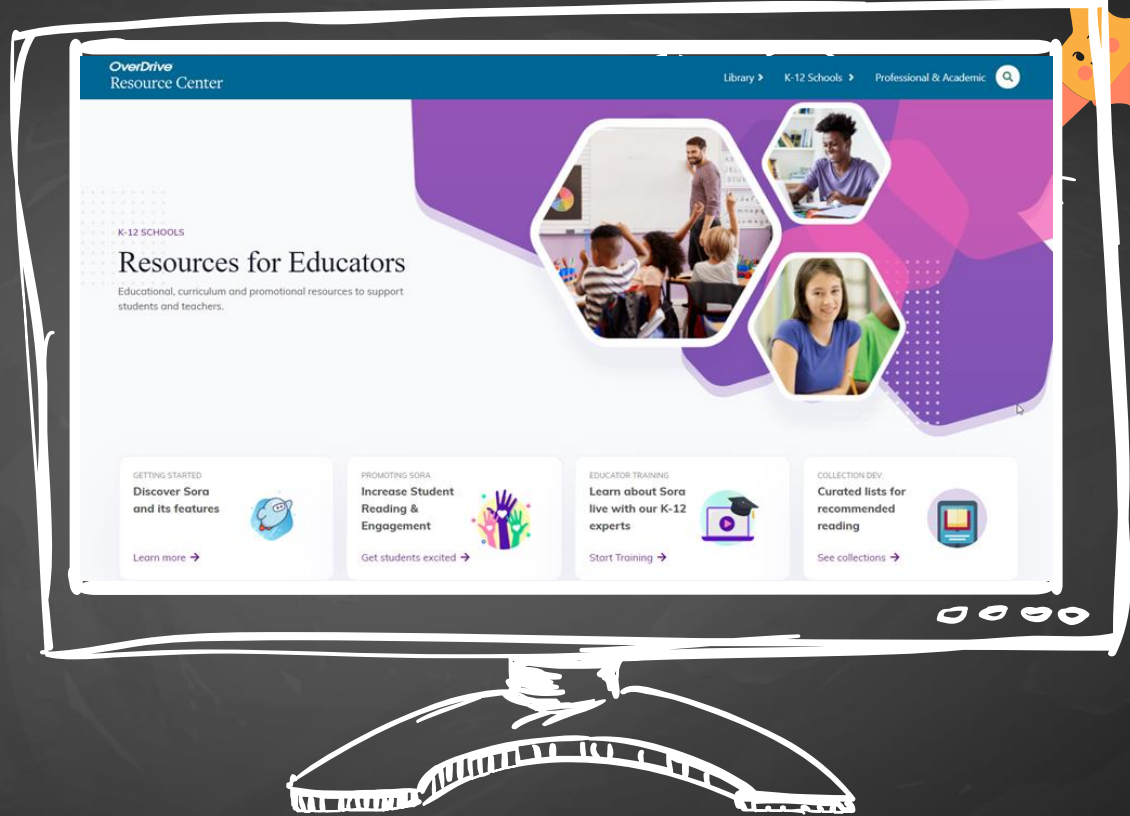


OverDrive
Resources

Which Sora feature(s) or resource(s) are you most interested in exploring? Choose all that apply.

- ☐ Multilingual interface
- ☐ Alternate digital formats in Sora, like read-alongs and audiobooks
- ☐ Customizable reading & listening settings
- ☐ Reading offline
- ☐ Gamification & progress monitoring features
- ☐ The new student dashboard tool in Marketplace
- ☐ The free Social & Emotional Learning collection
- ☐ How-to videos and other training resources
- ☐ Marketing & outreach resources for your school community
- ☐ Recommended title lists created by OverDrive staff librarians

OverDrive Resource Center



<https://resources.overdrive.com/k-12-schools/>

Next steps



- Contact your **OverDrive account team**
- Review **resources** from today's session
- Explore the **OverDrive Resource Center**

OverDrive[®]

Thanks!

