



Getting Started with Sora

December 2021

OverDrive®

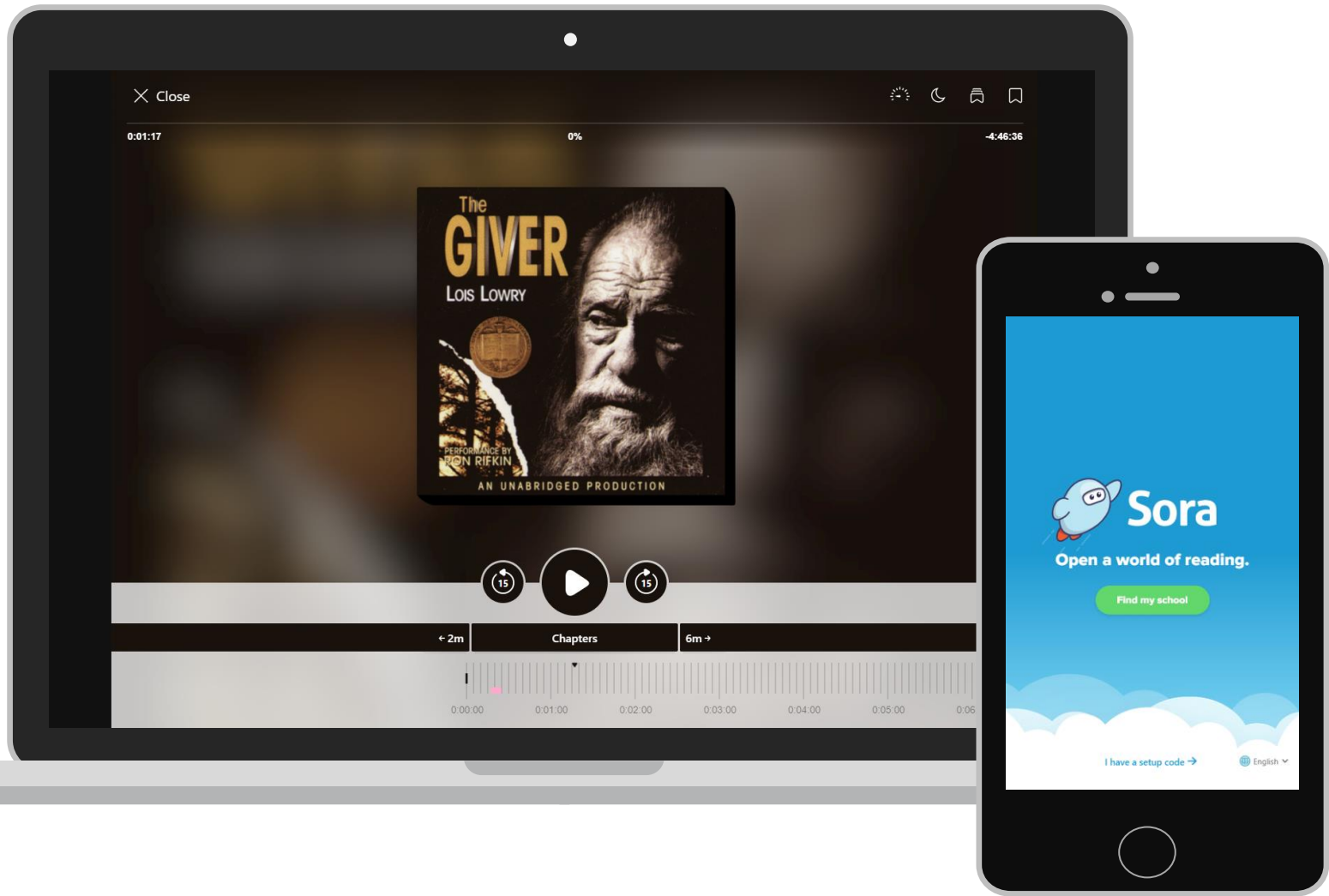
Agenda

- I. What is Sora?
- II. Live demonstration
- III. Next steps & resources

Poll: How familiar are you with Sora?

- I'm not sure what Sora is.
- I haven't signed in yet.
- I've signed in once or twice.
- I am somewhat familiar with Sora.
- I use Sora often.






What is Sora?

*Sora is the best way
for students to
access your school's
digital collection.*

soraapp.com
or download the app



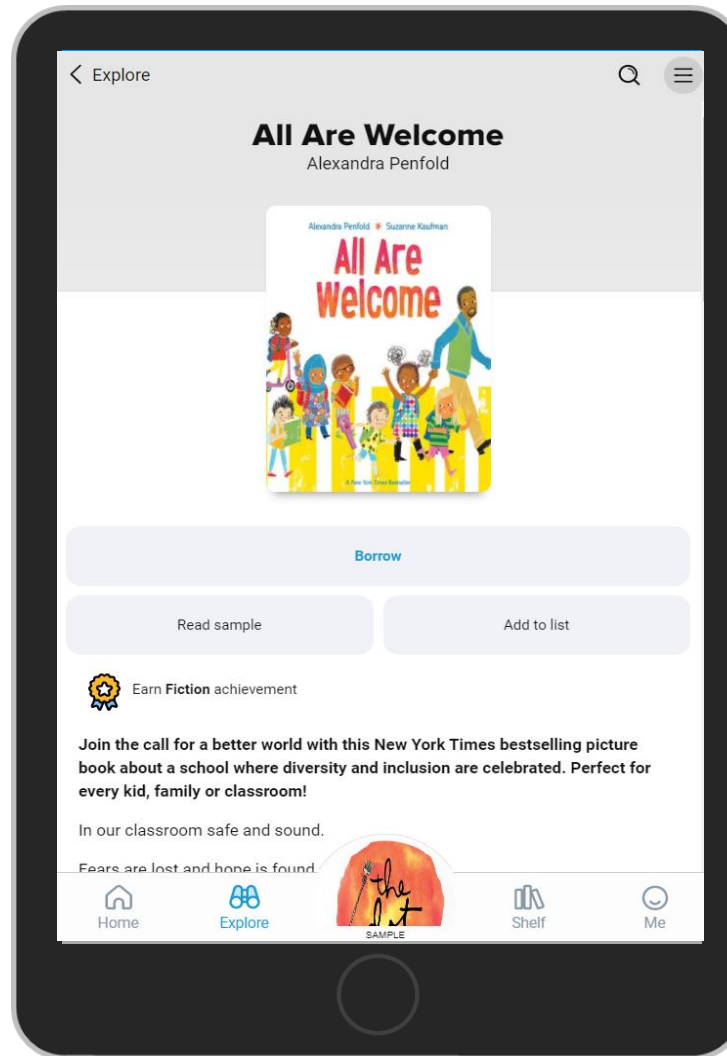
What's the difference?

OverDrive®	
 Sora The student reading app	OverDrive® Marketplace™
K-12 student reading app	Shopping & administrative portal
The best way for students (and staff) to access your school's digital collection.	The back-end website where staff can build your digital library, assign titles, and curate collections.

Live demonstration



Sora features



- Access assigned titles
- Take notes
- Export highlights
- Read or listen offline
- Earn achievements
- Add a public library
- View reading stats
- Read with a tap

Poll: Which feature(s) will students be most excited to use?

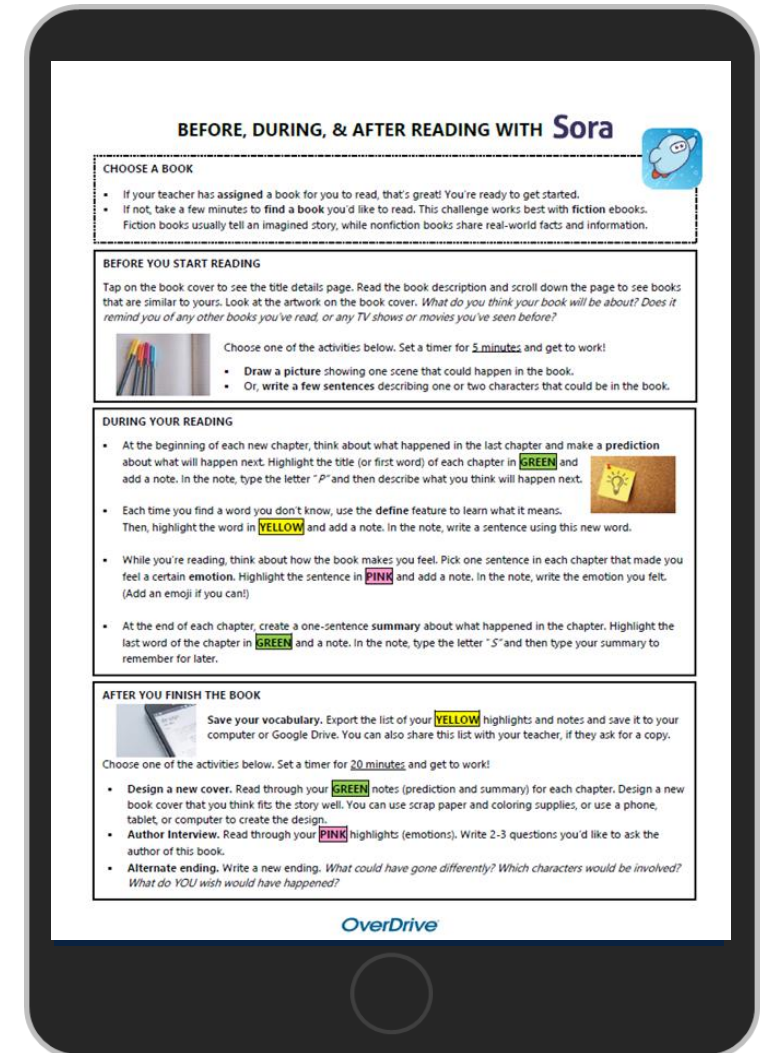
- exporting notes and highlights
- reading and listening offline
- adding a public library
- customizing reading and listening settings
- viewing reading stats
- defining new words
- earning badges for achievements
- changing their nickname and avatar



Introducing Sora to your school community

- Post promotional **graphics**
- Provide students and staff with Sora **elearning modules**
- Share a **how-to video** with colleagues
- Host your own **presentation**
- Give students **time to explore**
- Incorporate a **Sora activity** in class
- Use Sora in a **lesson**

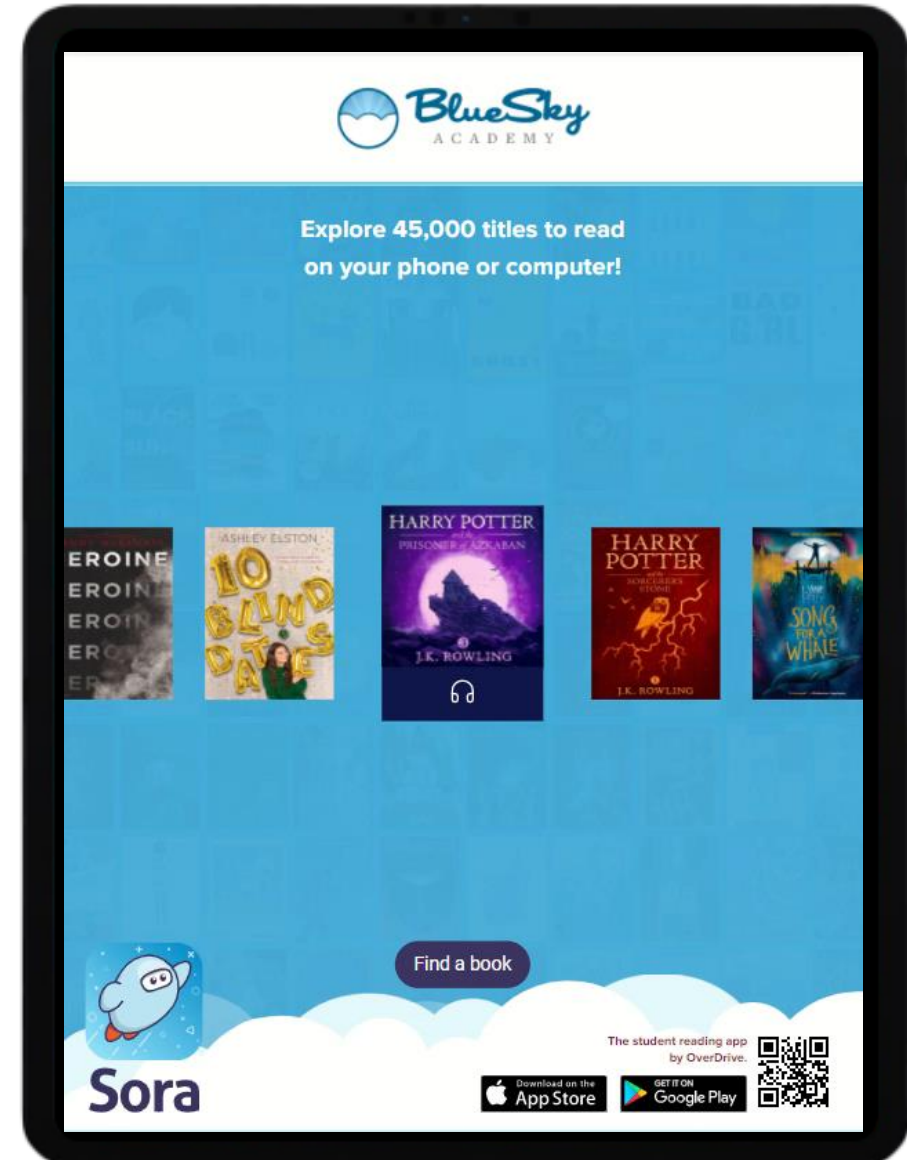
Find these materials and more on the
OverDrive Resource Center!



Sora Showcase

WHAT IS Sora Showcase?

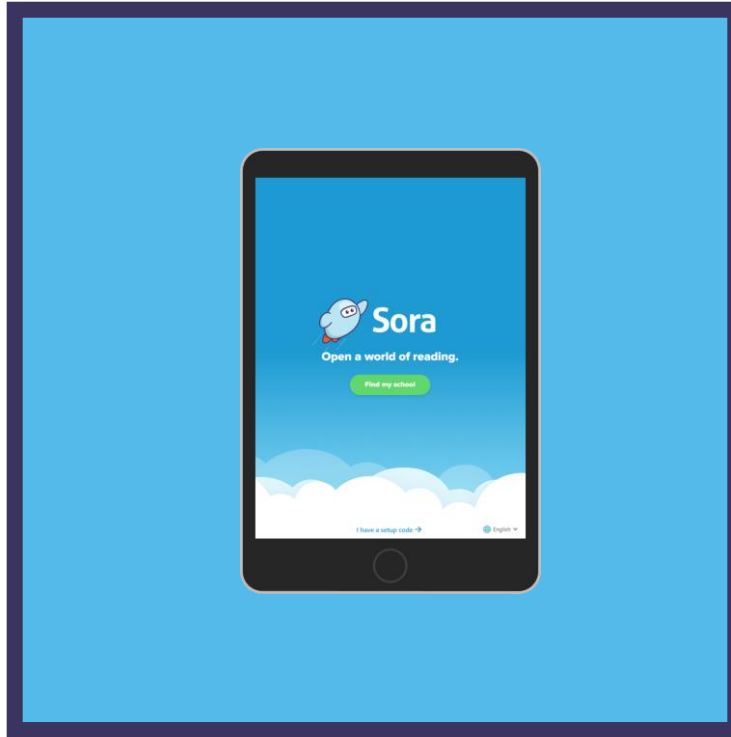
*A free, interactive
discovery kiosk software.*



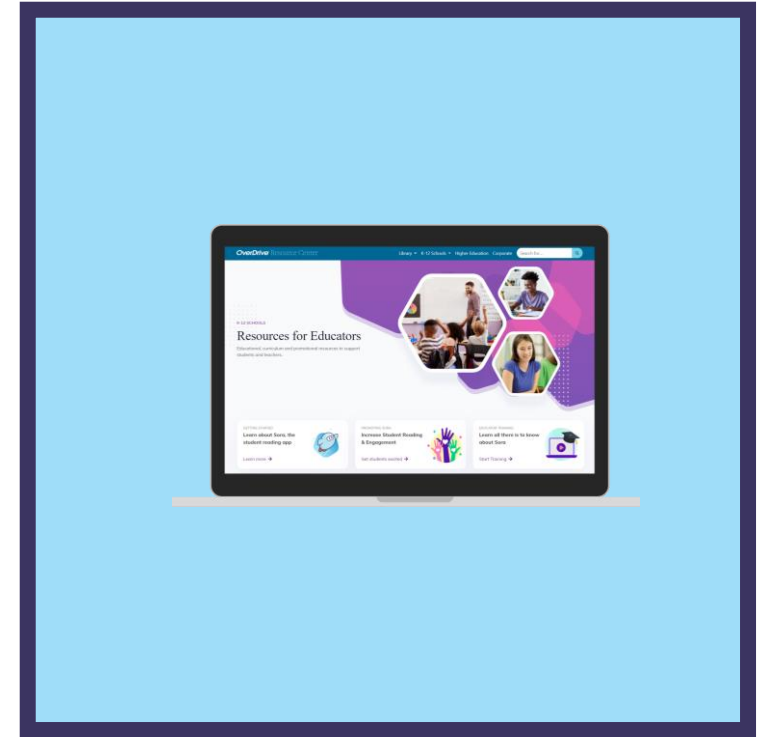
Next steps for success



Download the Sora app or visit soraapp.com.



Give students time to explore.

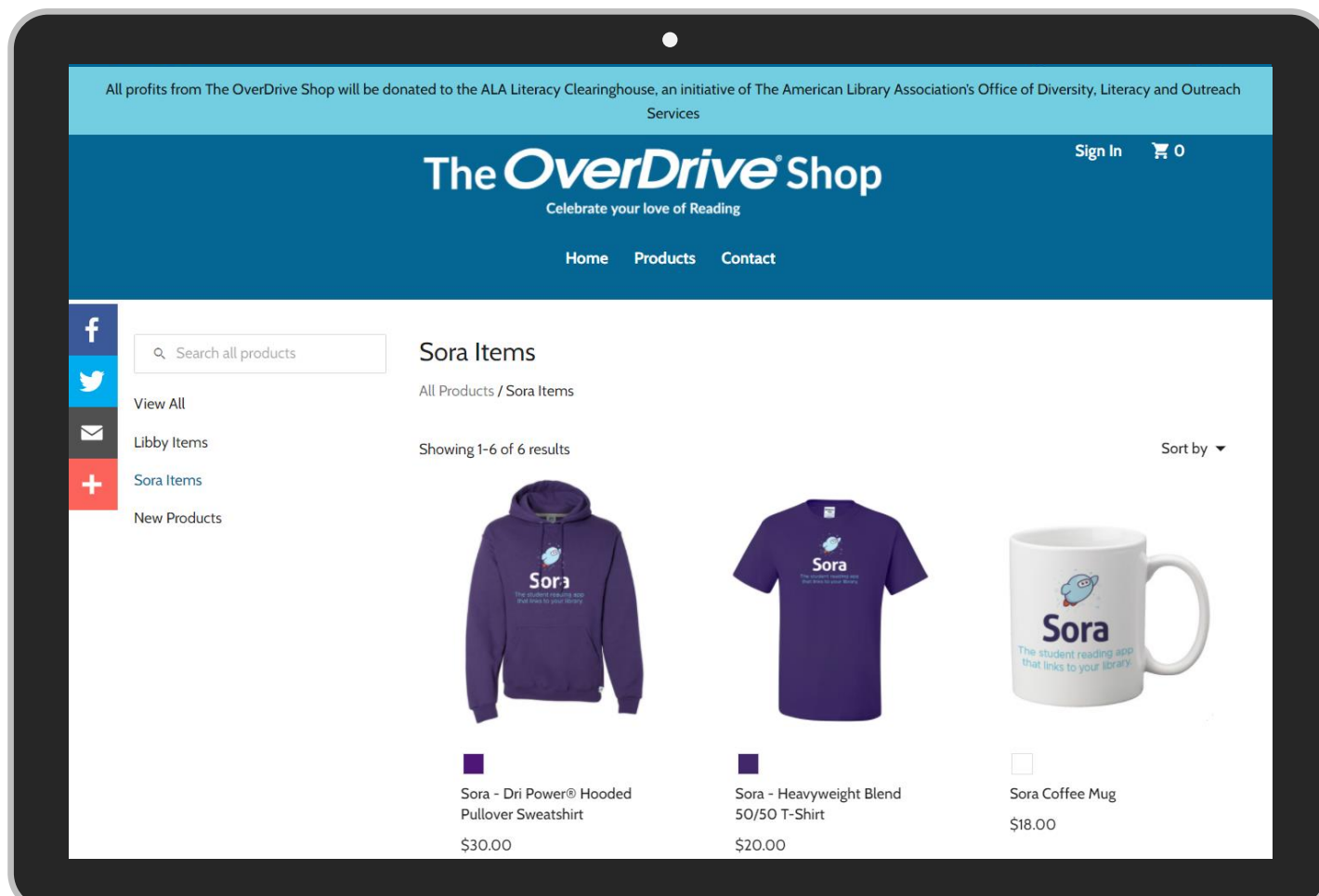


Discover resources on the [Resource Center](#).

Poll: Based on your role, what are the top 2 actions you plan to implement?

- discover Sora for yourself
- share Sora knowledge with a colleague
- introduce/promote Sora to students
- incorporate Sora into curriculum or a student club
- use OverDrive marketing resources with your school community





Resources

Answer frequently asked questions and get support.

[Meet Sora](#)

[Sora Help](#)

[Resource Center](#)

[OverDrive Schools Blog](#)

[The OverDrive Shop](#)

Mark your calendars!



December 16 at 2 PM ET

Hear from our Marketing &
Outreach experts

Coming Soon



New for 2022

Sora Essentials &
Sora Connections

Coming Soon



New for 2022

Marketplace Essentials &
Marketplace Connections

Coming Soon



Complete this questionnaire after watching the **Getting Started with Sora training**.

Knowledge Check

Answer the questions below to check your understanding of the material in this training.

What is Sora? *

- ☐ a. The one-tap reading app
- ☐ b. The student reading app and the best way for students to access your school's digital collection
- ☐ c. The back-end shopping and administrative portal
- ☐ d. The resource for marketing and outreach materials, staff training, and collection development lists

How can you access Sora? *

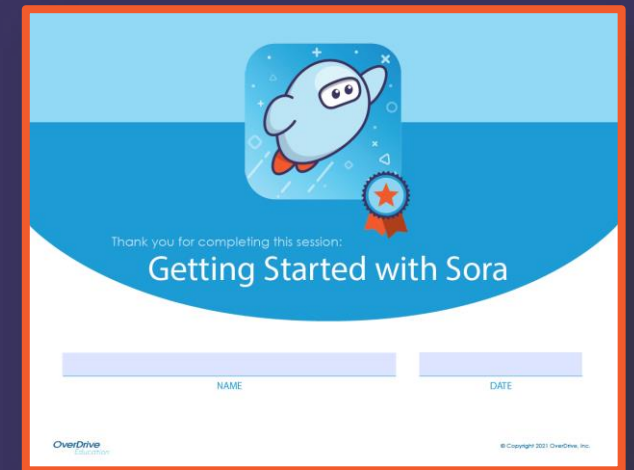
- ☐ a. Visit soraapp.com in any web browser
- ☐ b. Download the app
- ☐ c. Visit libbyapp.com in any web browser
- ☐ d. Both a & b

Which of these is **NOT** a way to browse and search for titles in Sora? *

- ☐ a. Scroll collections on the Explore tab
- ☐ b. Choose a subject badge on the Me tab
- ☐ c. Browse subject categories or set preferences

Earn your certificate

1. Take the post-webinar [assessment](#).
2. Download your certificate, add your name, and save.



THANK YOU

OverDrive[®]