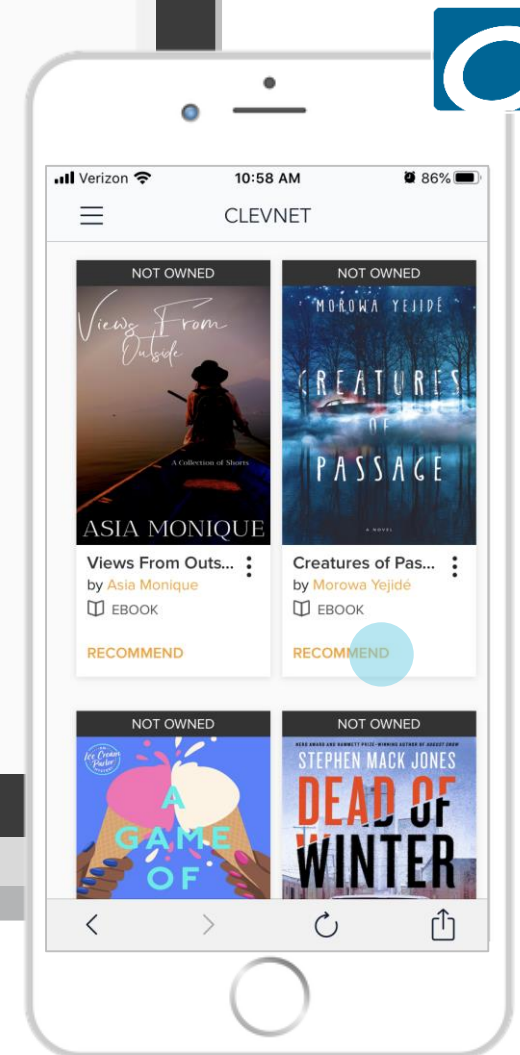
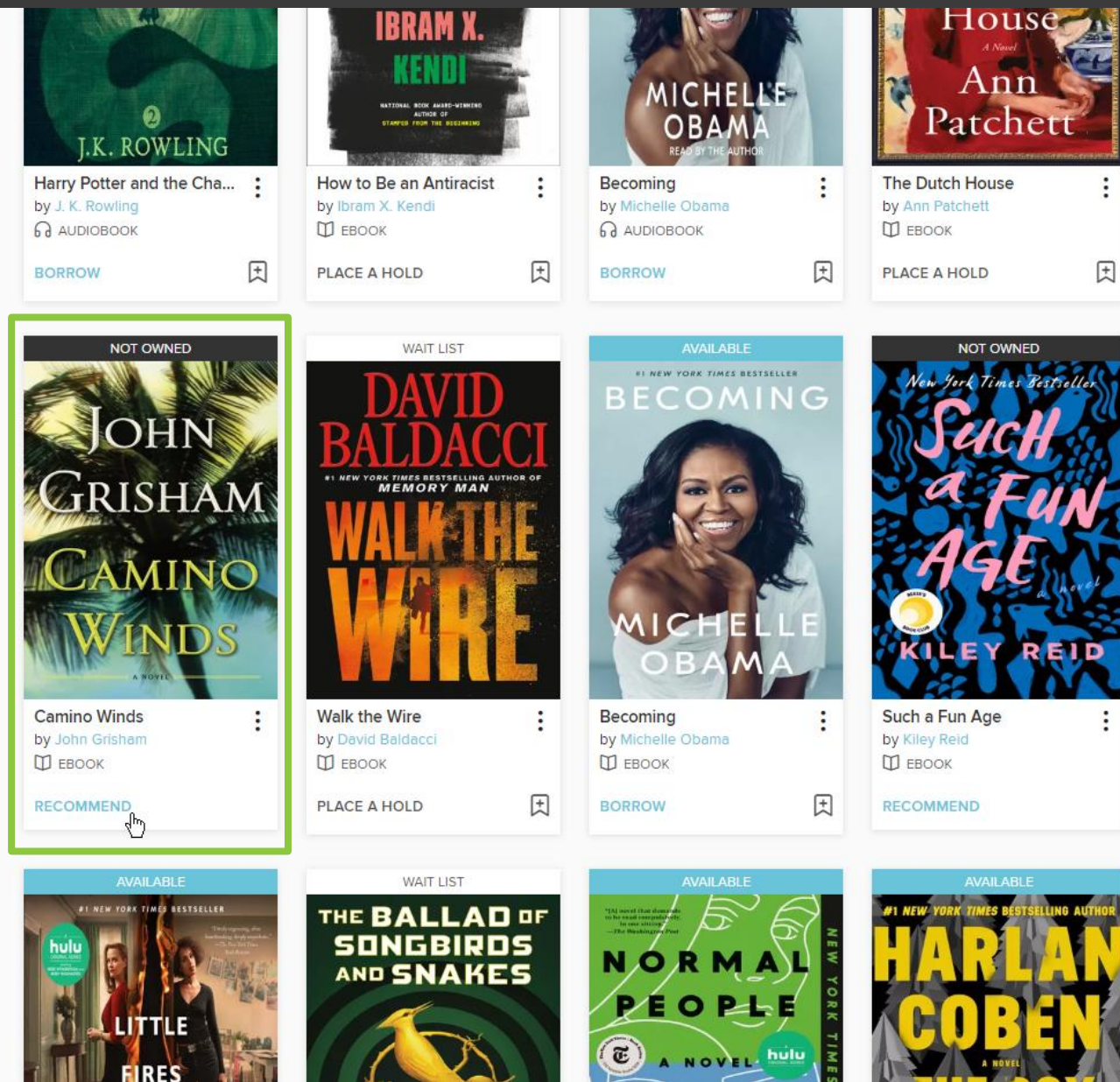


RTL Manager

How to create a Recommend to Library Manager plan in OverDrive Marketplace



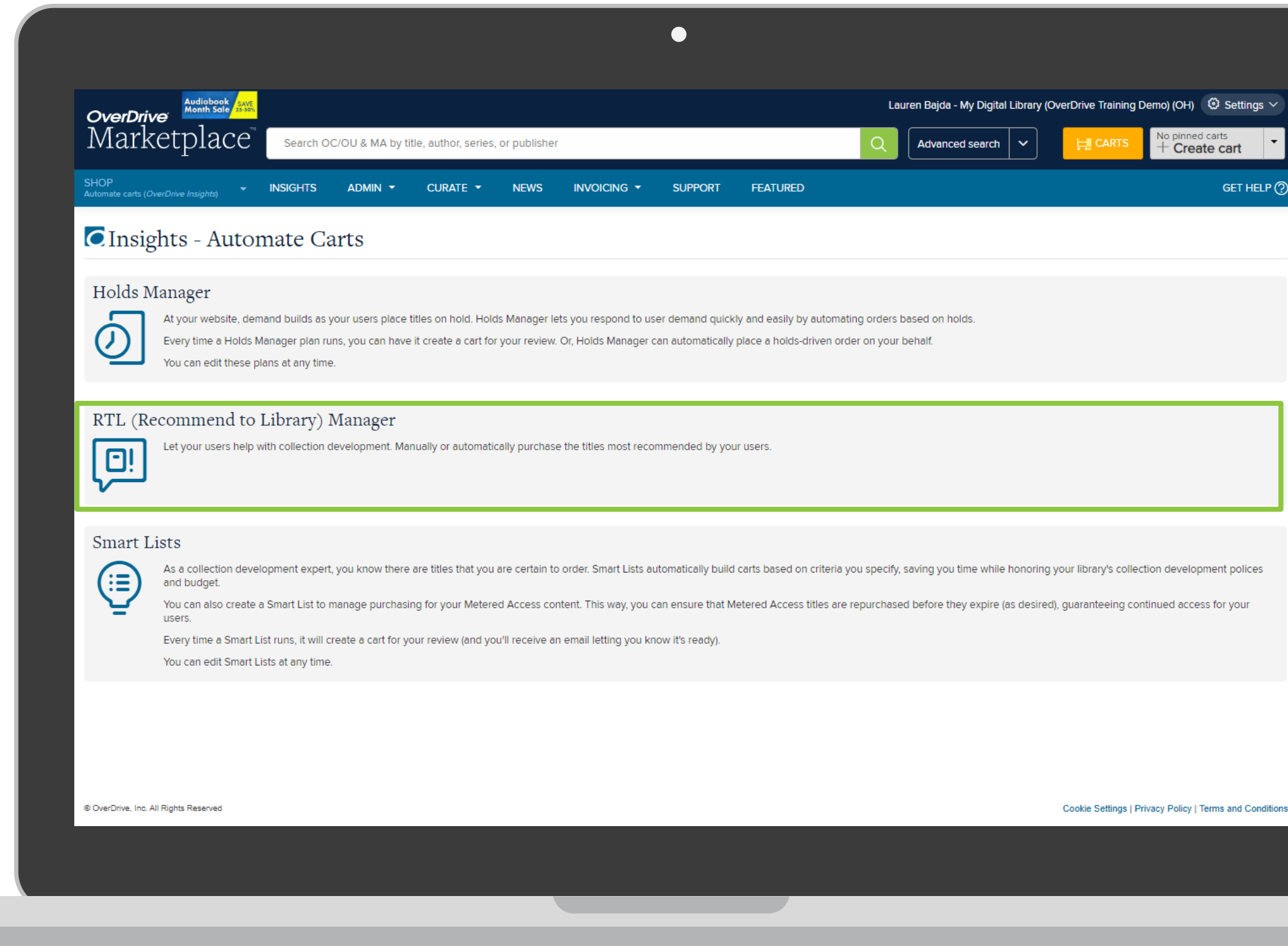
Recommend to library



Users can **recommend titles** through your OverDrive website and the OverDrive app.

RTL manager

Respond to demand for titles quickly and easily by *building* or *automating* orders based on **title recommendations** from your users.



RTL manager

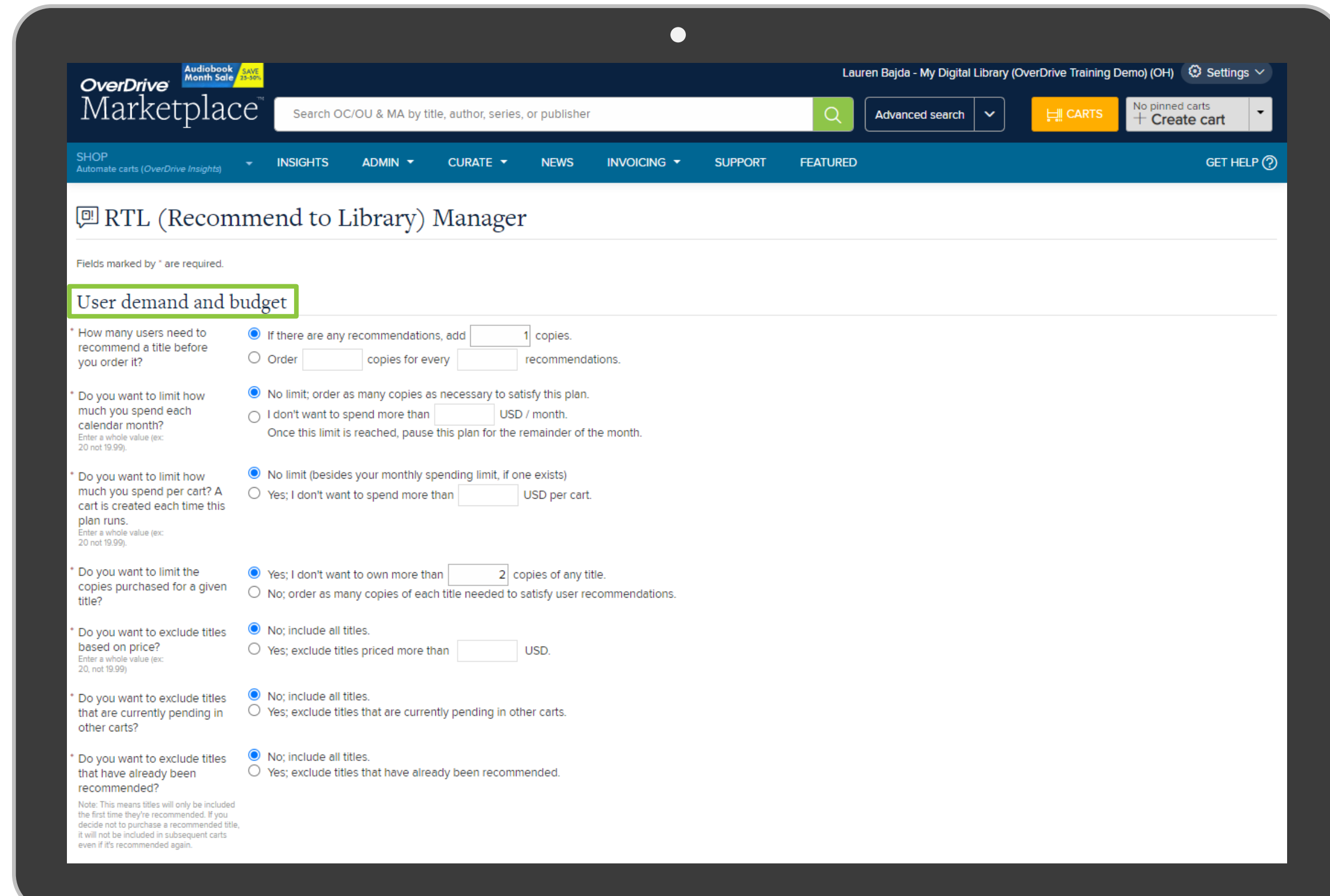
Benefits:

- ✓ Saves you time
- ✓ Keeps you on budget
- ✓ Gets new recommendations to your digital collection faster

The screenshot shows the OverDrive Marketplace RTL Manager interface. At the top, there is a navigation bar with the OverDrive Marketplace logo, a search bar, and various menu items like SHOP, INSIGHTS, ADMIN, CURATE, NEWS, INVOICING, SUPPORT, and FEATURED. The main content area is titled "RTL (Recommend to Library) Manager" and contains a brief explanation of the feature. Below the text, there is a table with three columns: "#", "Format(s)", and "Internal purchase order ID". The table lists three entries with their respective frequencies, budget remaining, last run date, next run date, and last edited by.

#	Format(s)	Internal purchase order ID	Frequency	Budget remaining	Last run date	Next run date	Last edited by
1.		RTL eBooks	Once a week	n/a	6/19/2020	6/26/2020	Briana Johnson-Sims
2.			Once a month	\$500.00	5/28/2020	6/28/2020	Heather Valentine-Gold
3.		PO # 12456352	Twice a month	n/a	6/20/2020	7/5/2020	Sydney Kalnay

Recap



Recap

Collection development policies

* Which format(s) would you like to include in this plan?
 Ebook
 Audiobook
 Video

* Do you want to include Metered Access titles?
 Yes; include Metered Access titles.
 No; exclude Metered Access titles.

* If a title is available in multiple lending models, add the following lending model to my cart by default:
 One Copy/One User
If a title meeting your plan's criteria is only available as Metered Access, it will be submitted with your plan as usual. If the title is available in more than one Metered Access lending model, it will be added to a cart for you to review and select the lending model you prefer.
 Metered Access
If a title is available in more than one Metered Access lending model, it will be added to a cart for you to review and select the lending model you prefer.
 Neither; please add the title to a cart for my review
If you select "Neither" and a title is available in more than one lending model, it will be added to a cart for you to review and select the lending model you prefer.

Do you want to exclude abridged audiobooks?
 No; include abridged audiobooks.
 Yes; exclude abridged audiobooks.

Do you want to exclude certain publishers?
Include these publishers
108 Media
1091
1953
3 Alliance Enterprises, Inc.
711 Press
9 Story Media Group
A & C Black Publishers Ltd
A&E Television Networks
ABC-CLIO
>
<
Exclude these publishers

Do you want to exclude certain audiences?
Include these audiences
Adult Fiction
Adult Nonfiction
Juvenile Fiction
Juvenile Nonfiction
Young Adult Fiction
Young Adult Nonfiction
>
<
Exclude these audiences

Recap

Do you want to exclude certain languages?

Include these languages

- Abkhazian
- Afar
- Afrikaans
- Akan
- Albanian
- Amharic
- Arabic
- Aragonese
- Armenian

Exclude these languages

Do you want to exclude certain branches?

Include these branches

- Blue Sky Campus
- Instant Digital Card Users

Exclude these branches

Do you want to include preorder titles?

Yes

No

Scheduling

How often do you want this plan to run?

Once a week

If you select twice a month, this plan will run on the 5th and 20th of each month.

* Do you need to temporarily pause this RTL (Recommend to Library) Manager plan? If yes, on what date do you want this RTL plan to run again?

6/26/2020

Select a future date (tomorrow or later).

If desired, please enter an internal purchase order ID.

RTL eBooks

* When this RTL (Recommend to Library) Manager plan runs, do you want it to save a cart for your review or submit an order on your behalf?

Save a cart; the plan will run on the date entered and create a cart for review.

Place an order; the plan will run on the date entered and automatically place an order.

Recap

Armenian

Do you want to exclude certain branches?

Include these branches

Blue Sky Campus
Instant Digital Card Users

Exclude these branches

Do you want to include preorder titles?

Yes
 No

Scheduling

How often do you want this plan to run?

Once a week
If you select twice a month, this plan will run on the 5th and 20th of each month.

* Do you need to temporarily pause this RTL (Recommend to Library) Manager plan? If yes, on what date do you want this RTL plan to run again?

6/26/2020
Select a future date (tomorrow or later).

If desired, please enter an internal purchase order ID.

RTL eBooks

* When this RTL (Recommend to Library) Manager plan runs, do you want it to save a cart for your review or submit an order on your behalf?

Save a cart; the plan will run on the date entered and create a cart for review.
 Place an order; the plan will run on the date entered and automatically place an order.

If desired, please name your cart/order.

Reqs

CONTINUE **RESET** **CANCEL**

© OverDrive, Inc. All Rights Reserved

[Cookie Settings](#) | [Privacy Policy](#) | [Terms and Conditions](#)

Reqs

Reqs
Cart Type: RTL Manager

8 standard units
\$247.91

Last edited on 5/29/2020
by Briana Johnson-Sims

PURCHASE

THANK YOU

OverDrive[®]